



# *The Vinyl Works* Interior Finishes™ Collection



[www.thevinylworks.com](http://www.thevinylworks.com)

*Dive In!*

Using your device, open your camera, hold it over the QR code, and follow the link.



An enhanced content experience awaits on every page!

## TABLE OF CONTENTS

# Interior Pool Finishes™ Collection

One of the most important features of your pool is it's interior surface, which is why we offer finishes that provide upscale beauty and peace of mind for years to come. **Our Interior Pool Finishes™ are soft to the touch, resistant to ultraviolet rays and bacterial growth, and custom-manufactured for an exact fit.** They are also far easier to clean than other surfaces, meaning less time working on your pool, and more time swimming in it!

<i>Style &amp; Color Selection Guide</i> .....	3
<i>Perfect Seam® Technology</i> .....	4
<i>Bead Color Examples</i> .....	4
<i>Pearluster™ Interior Finishes</i> .....	5
<i>Medallion Embossed Borderless</i> .....	6 - 7
<i>NEW Patterns</i> .....	8 - 12
<i>Classic Collection</i> .....	13 - 16
<i>Geometric Collection</i> .....	17 - 21
<i>Contemporary Collection</i> .....	22 - 30
<i>Renew, Refresh, Remodel</i> .....	31
<i>Interior Finish Lineup Overview</i> .....	32 - 33
<i>Borderless Patterns &amp; Impressions</i> .....	34 - 35
<i>Warranty Information</i> .....	Back Cover

Some of the pool pictures and videos in this brochure have been computer generated. Pool shapes and features may not be 100% accurate. The interior finishes have been enhanced to give the viewer a general feel of how a chosen pattern may look in the pool.





# STYLE & COLOR SELECTION GUIDE

## Your Decor Options



### *Classic: Pages 13 - 16*

The classic design originated from the European culture. The Greek and the Roman are the main inspirations of the classic design. Very elegant and ornate; the classic design never goes out of style!



### *Geometric: Pages 17 - 21*

A geometric pattern is linear, consisting of geometric figures, such as triangles, rectangles, circles and squares. Geometric patterns are found in many places, including art and architecture, and they tend to be symmetrical. This creates a very clean, simple and sophisticated look.



### *Contemporary: Pages 22 - 30*

Contemporary design is rooted in the moment, as in this moment, the here and now. Smooth flowing profiles instead of ornamentation. A strong emphasis on line and form — two essentials of good design — gives contemporary style its energy.

## Water Color

Look for our water color guide below each pattern



**Aqua**

With color hues that will remind you of the Caribbean as the sand descends into the blue waters below your feet.



**Light**

A light blue that turns your pool into a tropical beach paradise.



**Medium**

Temperate medium blue shades transport you to lands and antiquities half a world away.



**Dark**

A dark sapphire hue whisks you away to the ocean's deepest waters, inviting you to explore all of the riches below its surface.

**NOTE:** This Water Color Guide is designed to give you an indication of the waters hue based on the interior finish you desire. However, the hue is subjective due to natural sunlight and the surrounding landscape which will affect the water color. Consult your dealer to choose the interior pool finish that will give you the results you are looking for.

# *PERFECT SEAM® TECHNOLOGY* — & *BEAD COLOR*



*Perfection is improving something until it is as flawless as possible.*

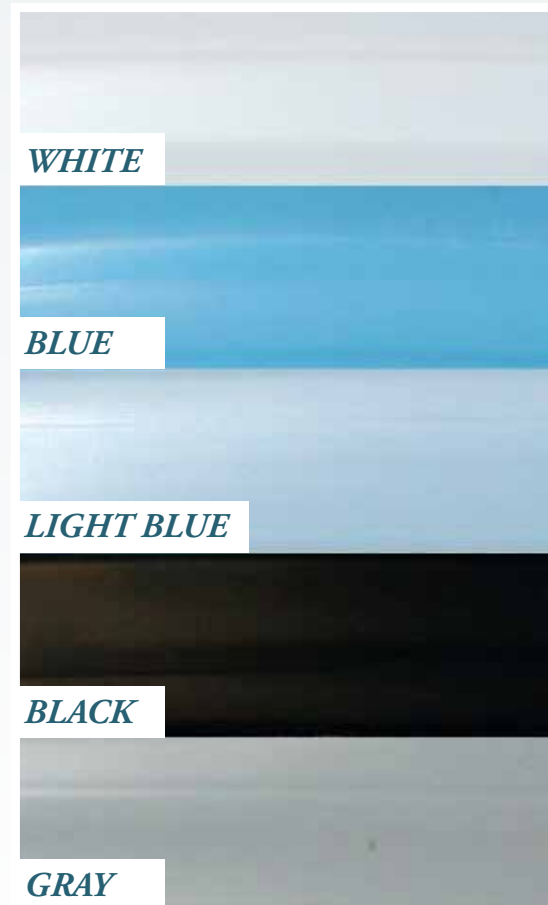
We have invested in state-of-the-art manufacturing equipment and combined it with time tested sealing methods. This allows us to make an interior pool finish that is as flawless as possible with seams that are less noticeable, strong and water tight!

Our Interior Pool Finishes™ are the finest made in the market today.



## *Bead Color*

Each of our interior finishes has a bead color companion. For your convenience we've noted bead colors next to each pattern.



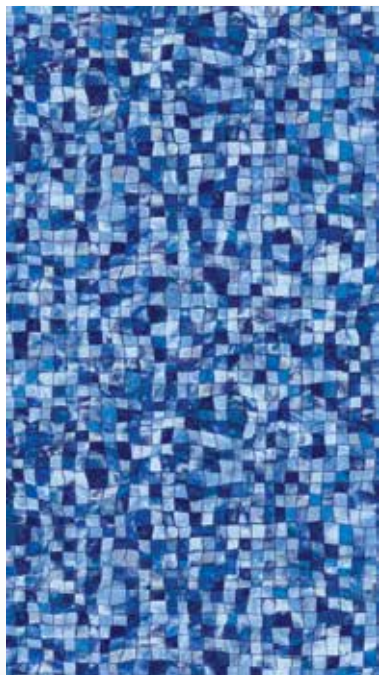


# pearluster

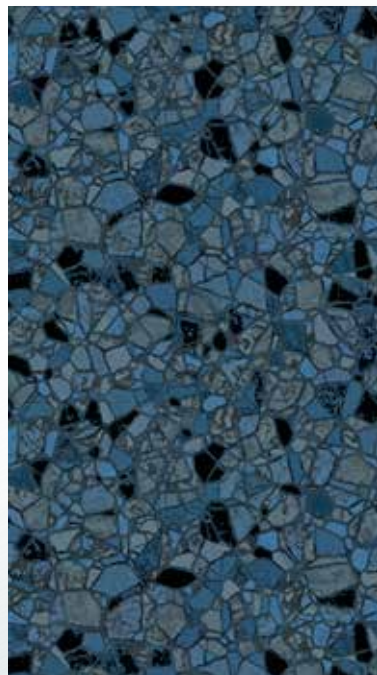
INTERIOR FINISHES™

*Pearluster*™ is an additional topcoat that gives your pools interior finish a mother-of-pearl luminance that actually shimmers as it basks in the sun's light. This is the latest in interior pool finish technology. We have 3 Pearluster™ Interior Finishes™ for you to choose from. All beautifully designed for your swimming pleasure.

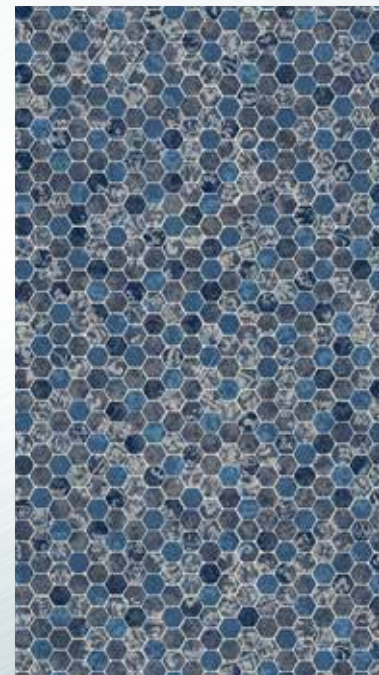
---



*Mosaic Wave*  
27 mil



*Sea Stone Marble*  
27 mil



*Oyster Gray Borderless*  
27 mil





# *Introducing Medallion Embossed Borderless*

An enhanced printed embossed experience.

33/33 mil



## *MEDALLION EMBOSSED BORDERLESS*

---

Manufactured with a new, unique process, Medallion Embossed Borderless brings a handmade look throughout the pool. Each medallion features a hand painted look, creating a custom-made appearance throughout the entire pool.



Thicker  
Material

Double  
Top Finish

Large Scale  
Repeat

Enhanced Printed  
All-Over Texture

Unique New  
Process



# CONTEMPORARY • *smooth flowing profiles*

Video contains digitally enhanced content.  
Hold camera here ▼

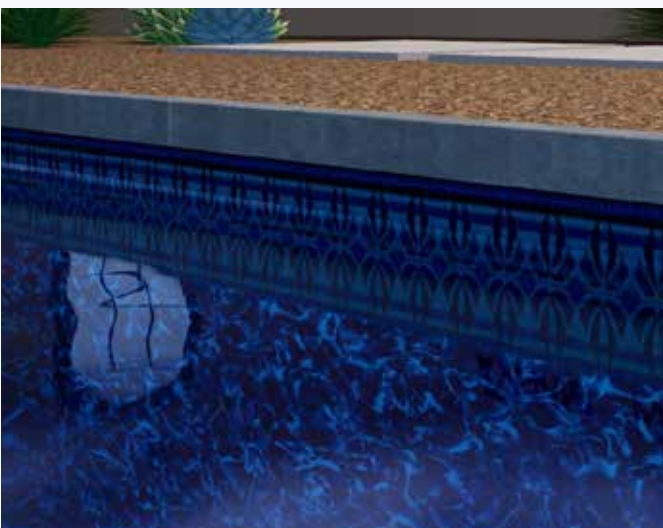


*Medallion Embossed Borderless*  
33/33 Mil | Blue Bead



GEOMETRIC • *clean, simple & sophisticated*

Video contains digitally enhanced content.  
Hold camera here ▼



NEW

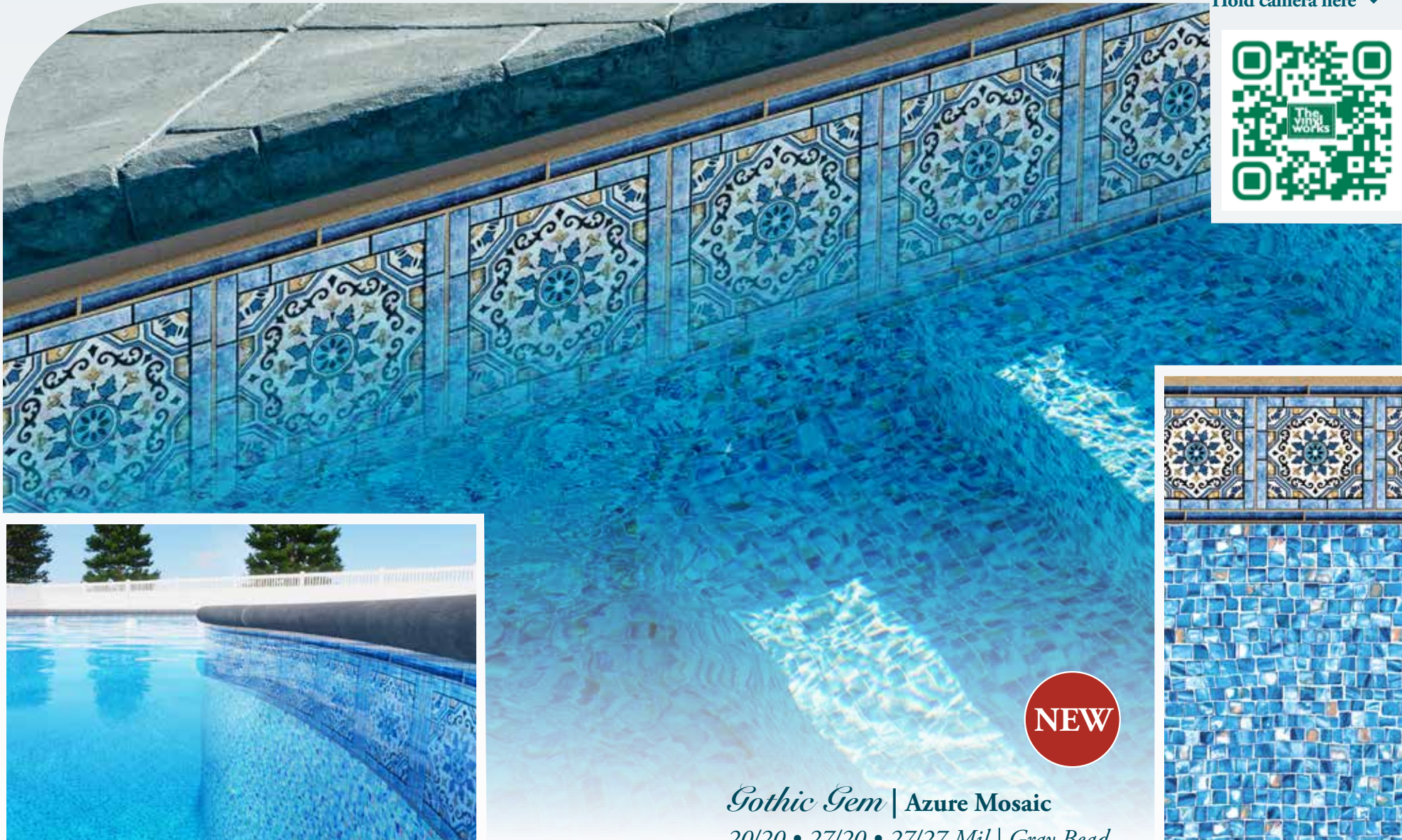
*Montauk* | Indigo Arctic  
27/20 • 27/27 Mil | Black Bead





GEOMETRIC • *clean, simple & sophisticated*

Video contains digitally enhanced content.  
Hold camera here ▼



NEW

*Gothic Gem* | Azure Mosaic  
20/20 • 27/20 • 27/27 Mil | Gray Bead





**GEOMETRIC** • *clean, simple & sophisticated*

Video contains digitally  
enhanced content.  
Hold camera here ▼

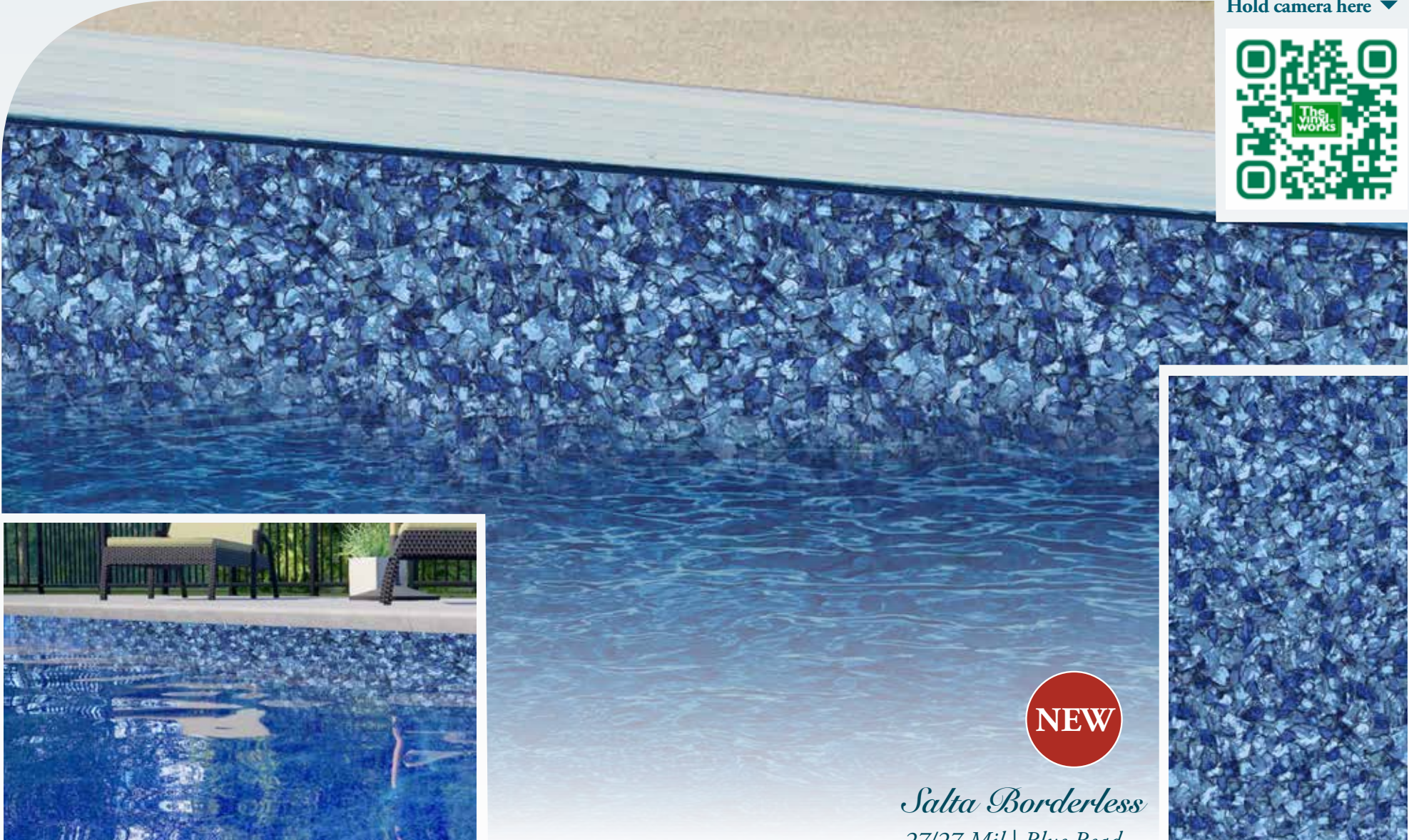


*Amalfi* | White Diffusion  
20/20 • 27/20 • 27/27 Mil | Black Bead



CONTEMPORARY • *smooth flowing profiles*

Video contains digitally enhanced content.  
Hold camera here ▼



NEW

*Salta Borderless*  
27/27 Mil | Blue Bead



*CLASSIC • refined, elegant & timeless*

# *Classic*

The classic design originated from the European culture. The Greek and the Roman are the main inspirations of the classic design. Very elegant and ornate, the classic design never goes out of style!

Video contains digitally enhanced content.  
Hold camera here ▼



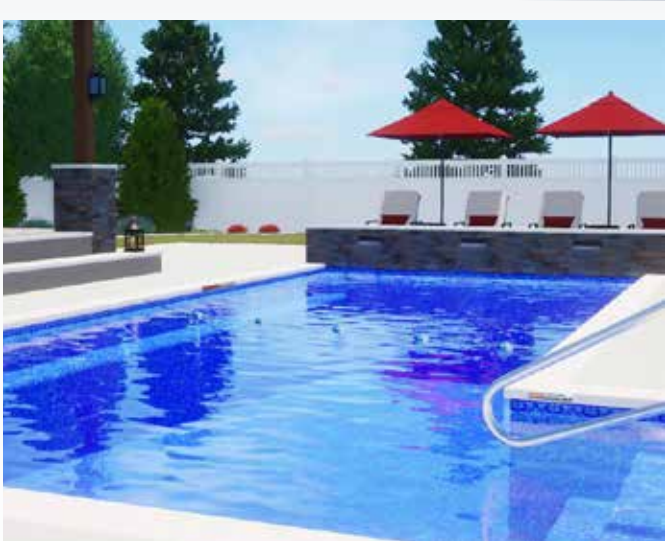
*Rialto* | **Blue Diffusion**  
27/20 • 27/27 Mil | *Black Bead*



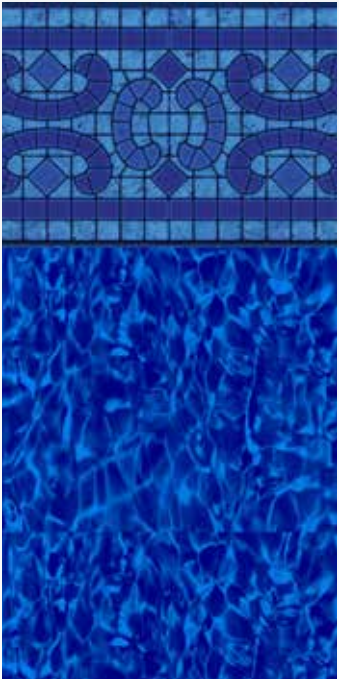


CLASSIC • *refined, elegant & timeless*

Video contains digitally enhanced content.  
Hold camera here ▼



*Napa Estates* | **Brilliant Bahama**  
20/20 • 27/20 • 27/27 Mil | *Blue Bead*





*CLASSIC • refined, elegant & timeless*

Video contains digitally  
enhanced content.  
Hold camera here ▼



*Sandstone Borderless*  
27/27 Mil | Gray Bead



*CLASSIC • refined, elegant & timeless*

Video contains digitally enhanced content.  
Hold camera here ▼



*Bayview Slate | White Diffusion*  
*20/20 • 27/20 • 27/27 Mil | White Bead*



**GEOMETRIC** • *clean, simple & sophisticated*

# *Geometric*

A geometric pattern is linear, consisting of geometric figures, such as triangles, rectangles, circles and squares. Geometric patterns are found in many places, including art and architecture, and they tend to be symmetrical. This creates a very clean, simple and sophisticated look.

Video contains digitally enhanced content.  
Hold camera here ▼



*Natural Stone | Quartzite*  
20/20 • 27/20 • 27/27 Mil | Gray Bead



GEOMETRIC • *clean, simple & sophisticated*

Video contains digitally enhanced content.  
Hold camera here ▼



*Carnegie* | Indigo Arctic  
20/20 • 27/20 • 27/27 Mil | Black Bead





*GEOMETRIC • clean, simple & sophisticated*

Video contains digitally  
enhanced content.  
Hold camera here ▼



*Caribbean Gold Speckle Borderless*  
20/20 • 27/20 • 27/27 Mil | White Bead





*GEOMETRIC • clean, simple & sophisticated*

Video contains digitally  
enhanced content.  
Hold camera here ▼



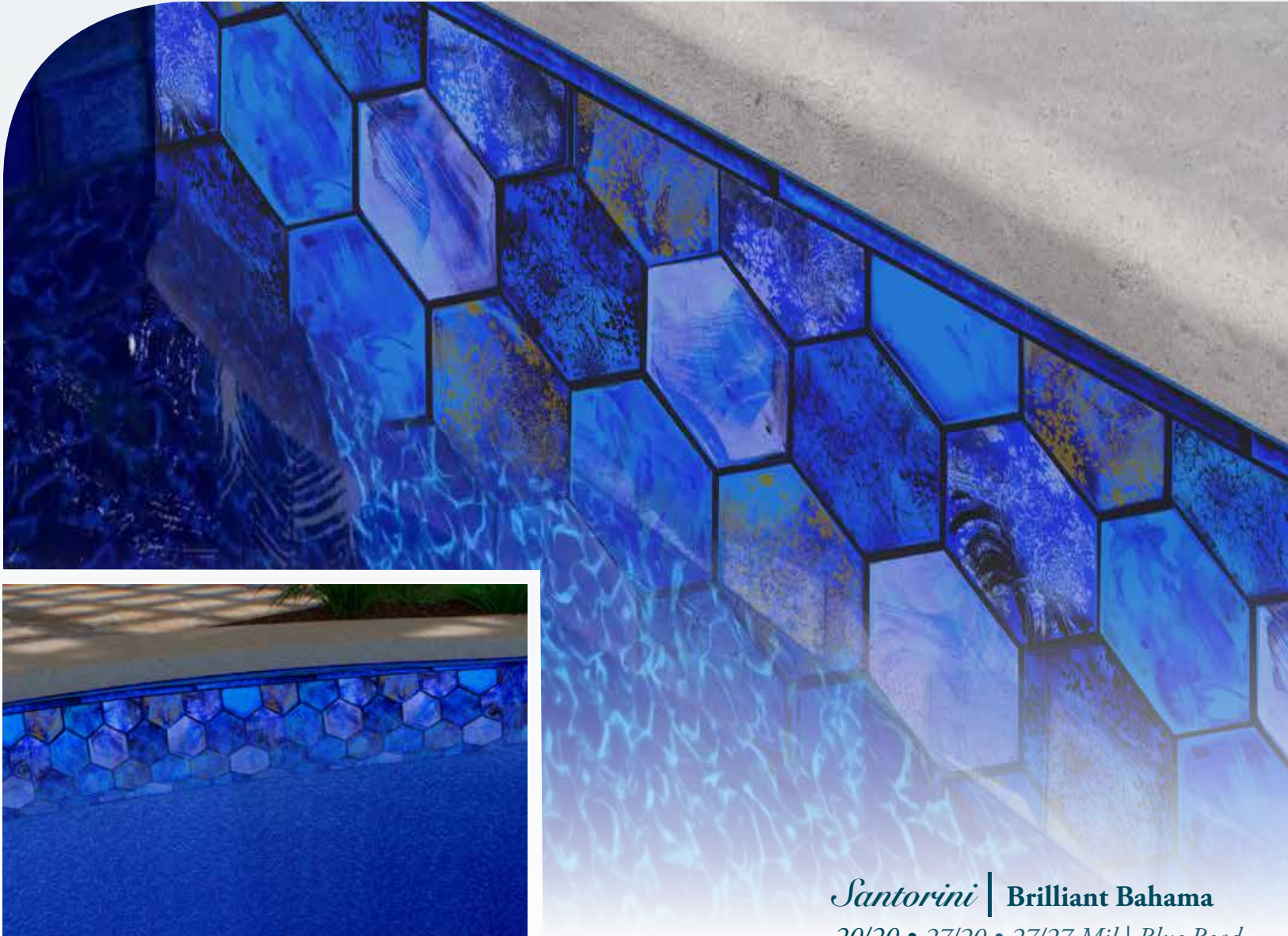
*Sierra* | Mosaic

20/20 • 27/20 • 27/27 Mil | Lt. Blue Bead



GEOMETRIC • *clean, simple & sophisticated*

Video contains digitally enhanced content.  
Hold camera here ▼



*Santorini* | **Brilliant Bahama**  
20/20 • 27/20 • 27/27 Mil | *Blue Bead*



CONTEMPORARY • *smooth flowing profiles*

Video contains digitally  
enhanced content.  
Hold camera here ▼



# Contemporary

Contemporary design is rooted in the moment, as in this moment, the here and now. Smooth flowing profiles instead of ornamentation. A strong emphasis on line and form — two essentials of good design — gives contemporary style its energy.



*Sunburst* | Azure Mosaic  
20/20 • 27/20 • 27/27 Mil | Gray Bead

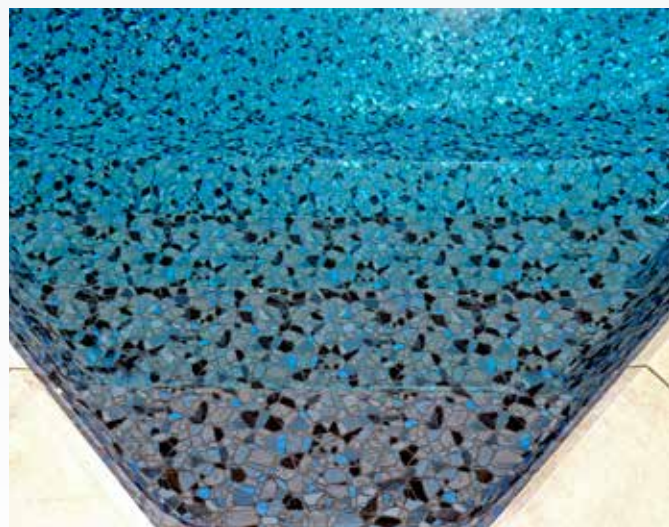




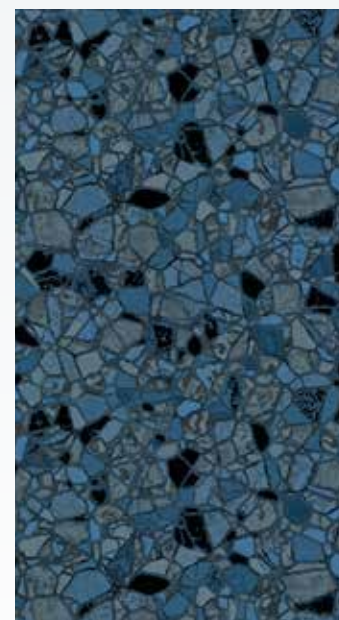
# CONTEMPORARY • *smooth flowing profiles*



Video contains digitally enhanced content.  
Hold camera here ▼



*Sea Stone Marble Borderless*  
27/27 Mil | Black Bead



PEARLUSTER™



# CONTEMPORARY • *smooth flowing profiles*

Video contains digitally  
enhanced content.  
Hold camera here ▼



*Agra* | **Brilliant Bahama**  
20/20 • 27/20 • 27/27 Mil | *Blue Bead*



## CONTEMPORARY • *smooth flowing profiles*

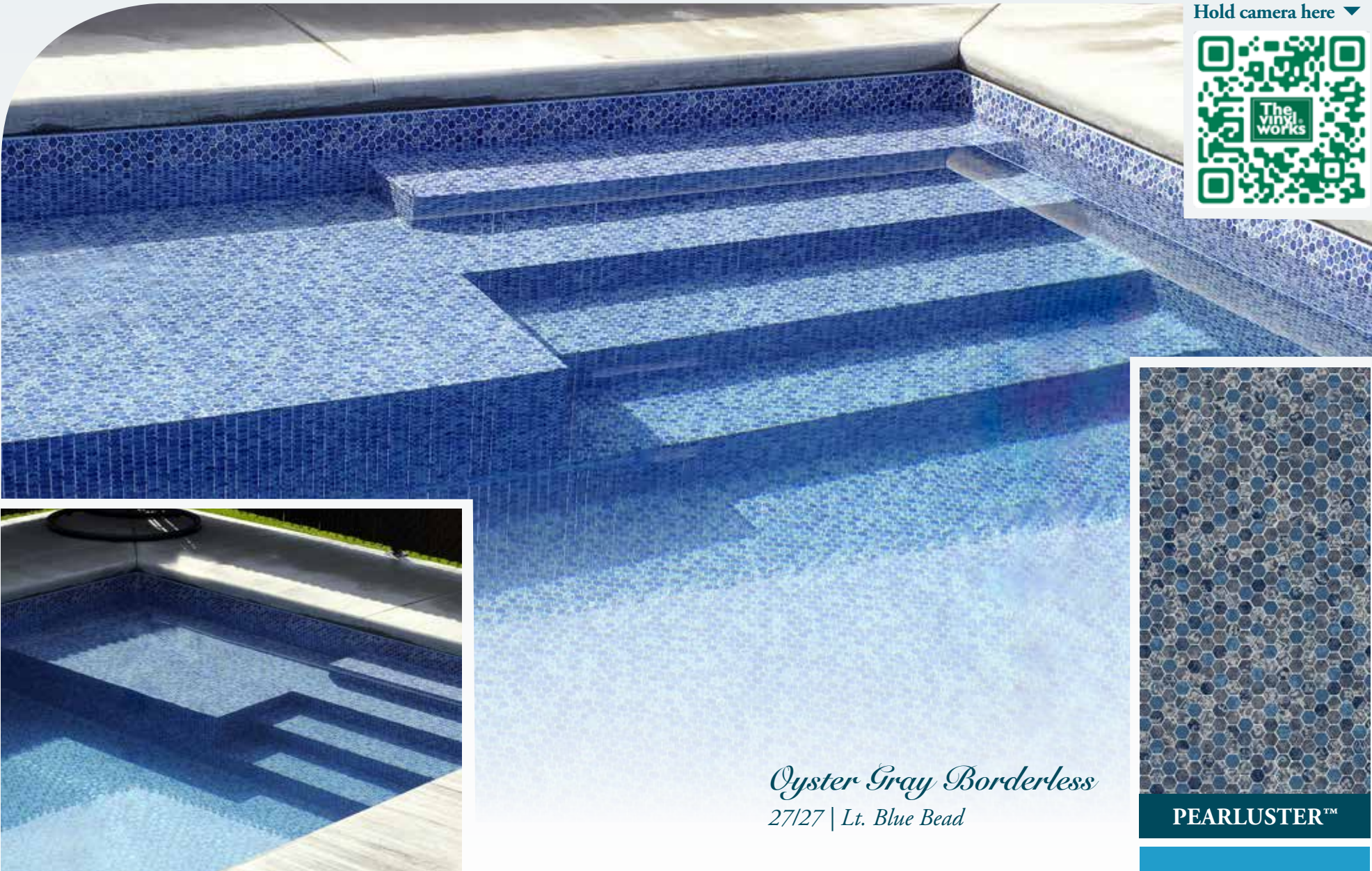
Video contains digitally  
enhanced content.  
Hold camera here ▼





CONTEMPORARY • *smooth flowing profiles*

Video contains digitally enhanced content.  
Hold camera here ▼



*Oyster Gray Borderless*  
27/27 | *Lt. Blue Bead*

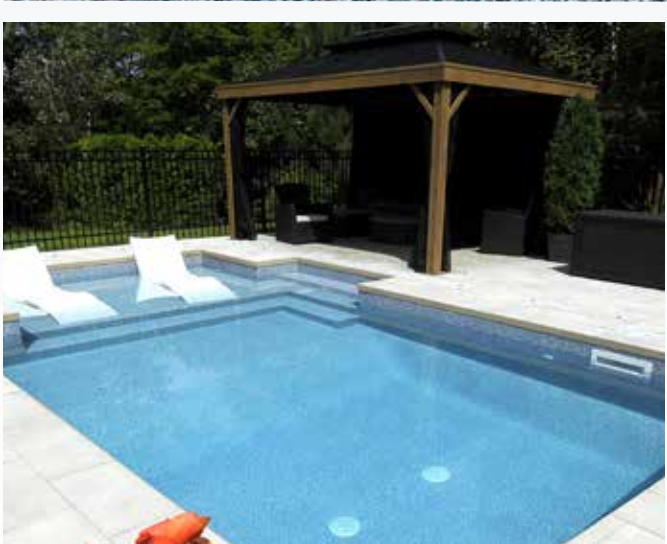


PEARLUSTER™



CONTEMPORARY • *smooth flowing profiles*

Video contains digitally enhanced content.  
Hold camera here ▼



*Gray Granite Borderless*  
27/27 | Gray Bead





## CONTEMPORARY • *smooth flowing profiles*

Video contains digitally  
enhanced content.  
Hold camera here ▼



*Black Slate Borderless*  
27/27 Mil | Black Bead



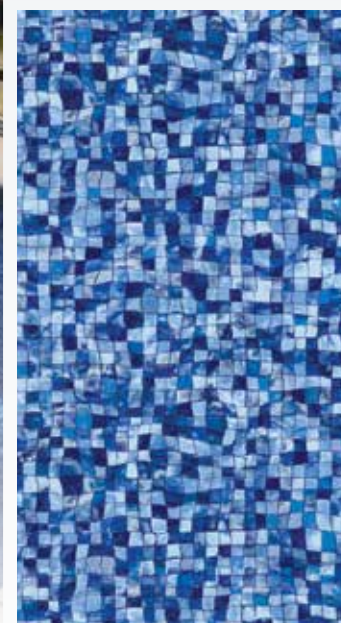


## CONTEMPORARY • *smooth flowing profiles*

Video contains digitally  
enhanced content.  
Hold camera here ▼



*Mosaic Wave Borderless*  
27/27 Mil | Lt. Blue Bead

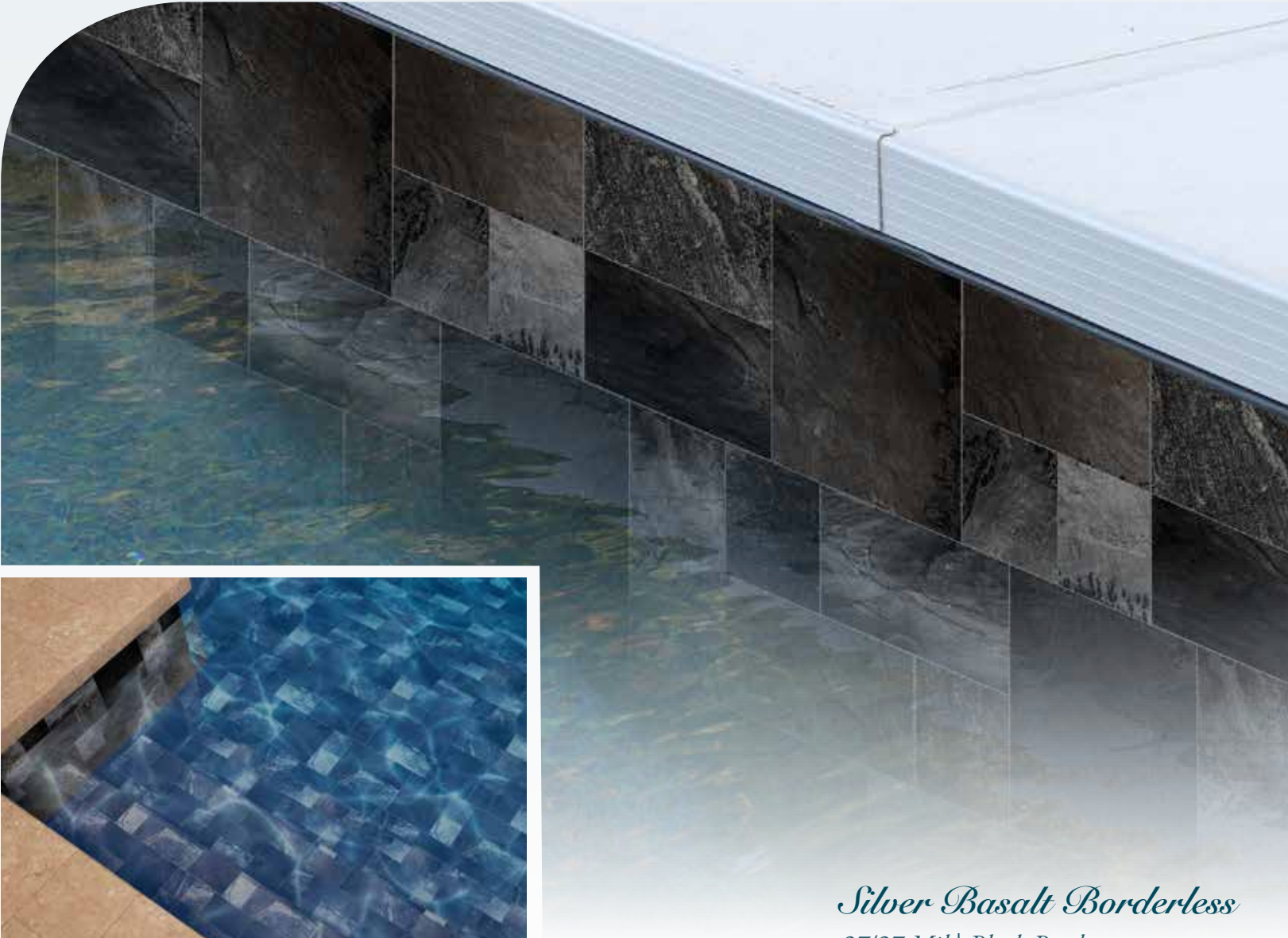


PEARLUSTER™



CONTEMPORARY • *smooth flowing profiles*

Video contains digitally enhanced content.  
Hold camera here ▼



*Silver Basalt Borderless*  
27/27 Mil | Black Bead



# Renew, Refresh, REMODEL

A stunning makeover is as simple as replacing your interior pool finish and adding a new entry system. It's very affordable and usually just takes a day or two to complete. Choose from our many beautiful options and enjoy your remodeled, revitalized new pool!



BEFORE



AFTER



## NEW ENTRY SYSTEM OPPORTUNITIES

Refurbishing your pool's interior? There's no better time to enhance your swimming experience with a new bench, step, sun deck, cove, or other entrance system! Choose from our many options of built-in stairs, Tread-Loc® Steps, or design your own!





# VINYL WORKS INTERIOR FINISHES™ COLLECTION

## & WATER COLOR GUIDE

### Aqua



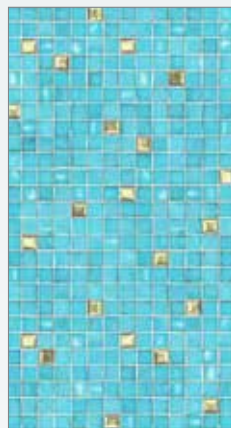
**Gothic Gem | Azure Mosaic**  
20/20 • 27/20 • 27/27 mil



**Sunburst | Azure Mosaic**  
20/20 • 27/20 • 27/27 mil



**Natural Stone | Quartzite**  
20/20 • 27/20 • 27/27 mil



**Caribbean Gold Speckle  
Borderless**  
20/20 • 27/20 • 27/27 mil



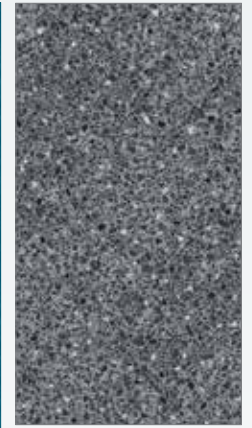
**Sandstone Borderless**  
27/27 mil



**Medallion Embossed Borderless**  
33/33 mil



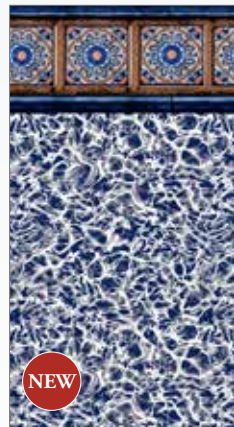
**Salta Borderless**  
27/27 mil



**Silver Antigua Borderless**  
27/27 mil

### Medium

### Medium



**Amalfi |  
White Diffusion**  
20/20 • 27/20 • 27/27 mil



**Bayview Slate |  
White Diffusion**  
20/20 • 27/20 • 27/27 mil



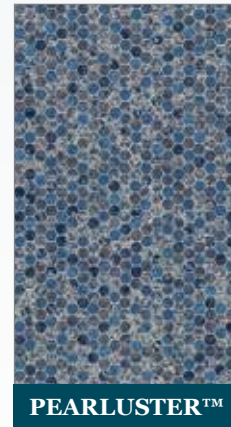
**Sierra | Mosaic**  
20/20 • 27/20 • 27/27 mil



**Rialto | Blue Diffusion**  
27/20 • 27/27 mil



**Mosaic Wave Borderless**  
27/27 mil



**Oyster Gray Borderless**  
27/27 mil



# VINYL WORKS INTERIOR FINISHES™ COLLECTION

## & WATER COLOR GUIDE

### Dark



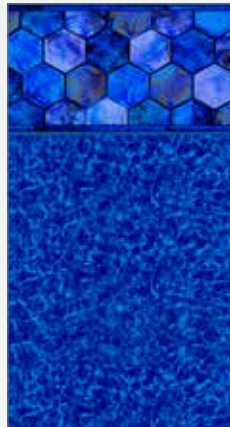
**Montauk | Indigo Arctic**  
27/20 • 27/27 mil



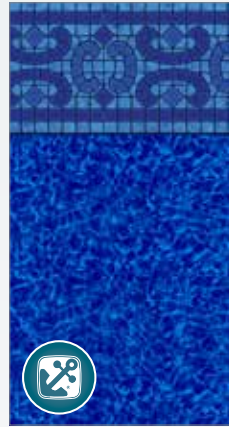
**Carnegie | Indigo Arctic**  
20/20 • 27/20 • 27/27 mil



**Agra | Brilliant Bahama**  
20/20 • 27/20 • 27/27 mil



**Santorini | Brilliant Bahama**  
20/20 • 27/20 • 27/27 mil



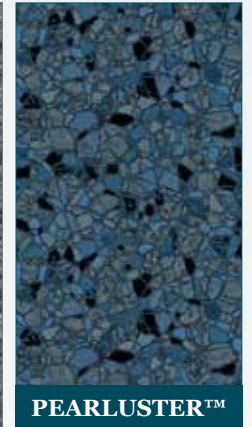
**Napa Estates | Brilliant Bahama**  
20/20 • 27/20 • 27/27 mil



**Black Slate Borderless**  
27/27 mil



**Gray Granite Borderless**  
27/27 mil



**PEARLUSTER™**  
**Sea Stone Marble Borderless**  
27/27 mil

### Dark



**Silver Basalt Borderless**  
27/27 mil



*The Interior Finishes™ in this brochure are representational of actual material but are not an exact match. Always ask your dealer to see an actual sample of the Interior Finish™ you choose to make certain it meets your expectation.*

Due to the nature of the material, and various pool angles, it is improbable that floor tiles or pattern repeats will align. This Water Color Guide is designed to give you an indication of the water's hue based on the interior finish you desire. However, the hue is subjective due to natural sunlight and the surrounding landscape which will affect the water color. Consult your dealer to choose the interior pool finish that will give you the results you are looking for.



*Exclusive Liner*



# Borderless & Impressions

**BORDERLESS PATTERNS:** No interest in a tile design? No problem! Your floor pattern can extend all the way up the sidewall.  
**The choice is yours!**

.....  
**IMPRESSIONS - 27 MIL:** For your pool entry system, we offer “Impressions,” a textured slip-resistant print design built for added comfort and safety to this high-traffic area.\*

\*Impressions material hue may vary slightly in appearance.

### Aqua



**Quartzite**  
27/20 • 27/27 mil



**Azure Mosaic**  
27/20 • 27/27 mil



**Sandstone**  
27/27 mil



**Caribbean Gold Speckle**  
20/20 • 27/20 • 27/27 mil

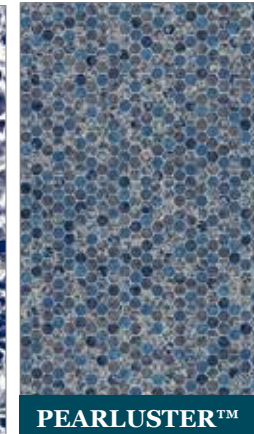
### Medium



**Medallion Embossed**  
33/33 mil



**White Diffusion**  
27/20 • 27/27 mil

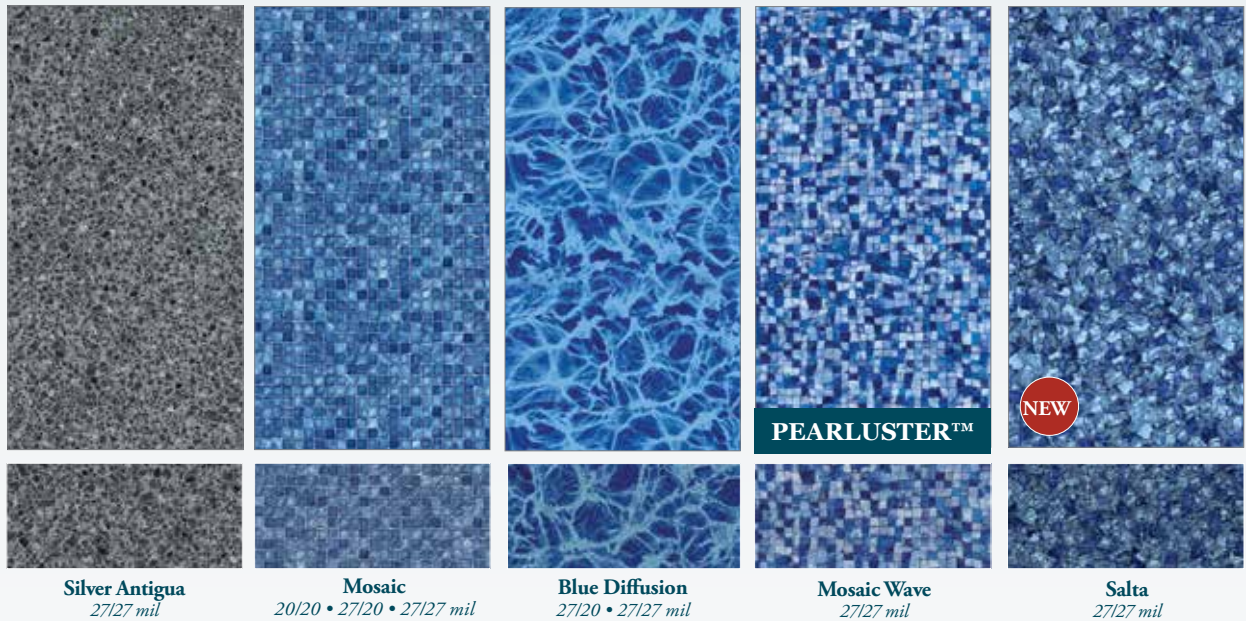


**Oyster Gray**  
27/27 mil

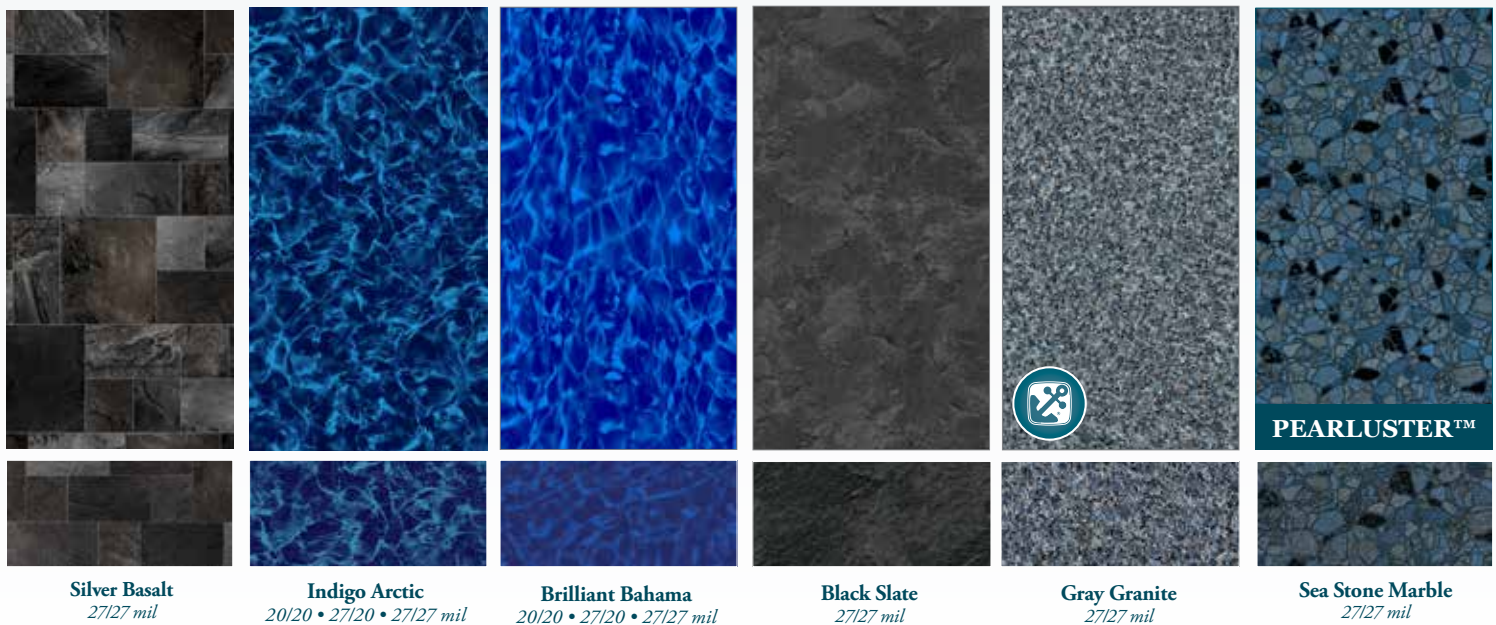


# BORDERLESS PATTERNS & IMPRESSIONS

## Medium



## Dark







## WARRANTIES

Our interior pool finishes carry 20 years of prorated coverage with the first 3 years covered in full. More comprehensive coverage is available to you through our Liner Guard Warranty. Ask your dealer for details.



## SAFETY

Your pool can give you, your family and guests many years of fun and relaxation. Take the responsibility for safety.

Any recreational activity that involves water poses a risk of personal injury. Swimming in an inground pool is no exception. Your awareness and understanding of safety practices and rules pertaining to the use of inground pools can reduce the risk of serious injury.

Read the Pool & Hot Tub Alliance's excellent brochure, "The Sensible Way To Enjoy Your Inground Pool", to learn how to avoid swimming related accidents.

Don't allow diving or jumping in your pool. Remember, alcohol consumption and swimming do not mix. Carefully supervise all the swimmers in your pool, especially small children. They're your responsibility. Always secure your pool from unsupervised and unauthorized use. Make sure signs, stickers and labels are posted and clearly visible and that rescue devices, such as life rings or ropes are nearby.

Swimmers using your pool are your responsibility. Visit <http://imperialpools.com/pool-safety-program> for understanding of safety practices and rules pertaining to the use of inground pools.



33 Wade Rd.  
Latham, New York 12110  
[www.imperialpools.com](http://www.imperialpools.com)